



# Jazler RadioStar 2

---

User Manual

Backup

## Contents

1	Summary .....	3
2	The backup utility .....	3
3	Mirroring facts .....	5
4	Backup scenarios .....	6

## 1 Summary

Jazler RadioStar2 is your radio station's heart! The heart has to be hosted in a PC and we hope and wish nothing goes wrong with the PC and its hardware. But in the case that it is accidentally damaged you should not have to create the databases and your programming of your RadioStar2 from scratch. This is the reason backup solutions have to be implemented. RadioStar2 offers an extremely useful utility for backup reasons the Backup utility.

## 2 The backup utility

By running the backup utility the below screen will appear.

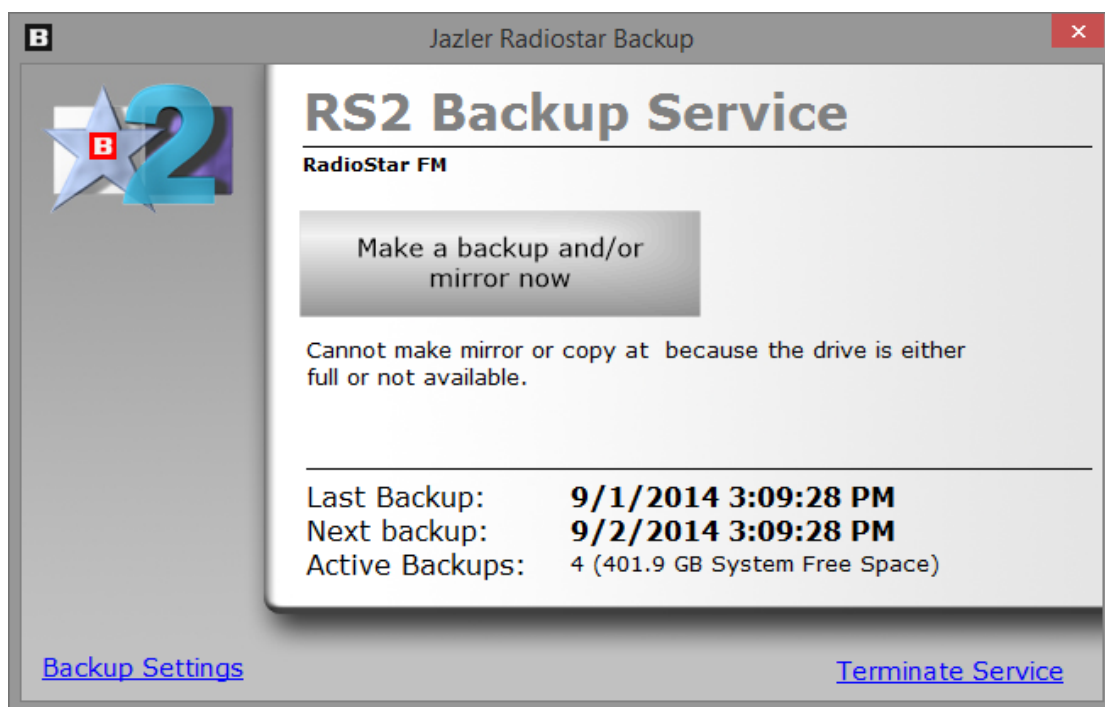


Figure 2-1

In the above image you can see the option to press the “Make a backup and/or mirror now” button in order to back up on the spot.

At the bottom of the screen information about the “Last backup”, “Next backup” and the “active backups” are provided.

At the bottom right corner there is the option to “terminate the service” (but we do not recommend the termination of the service).

At the bottom left of the screen you can press the button “Backup settings” and you will be redirected to the below screen.

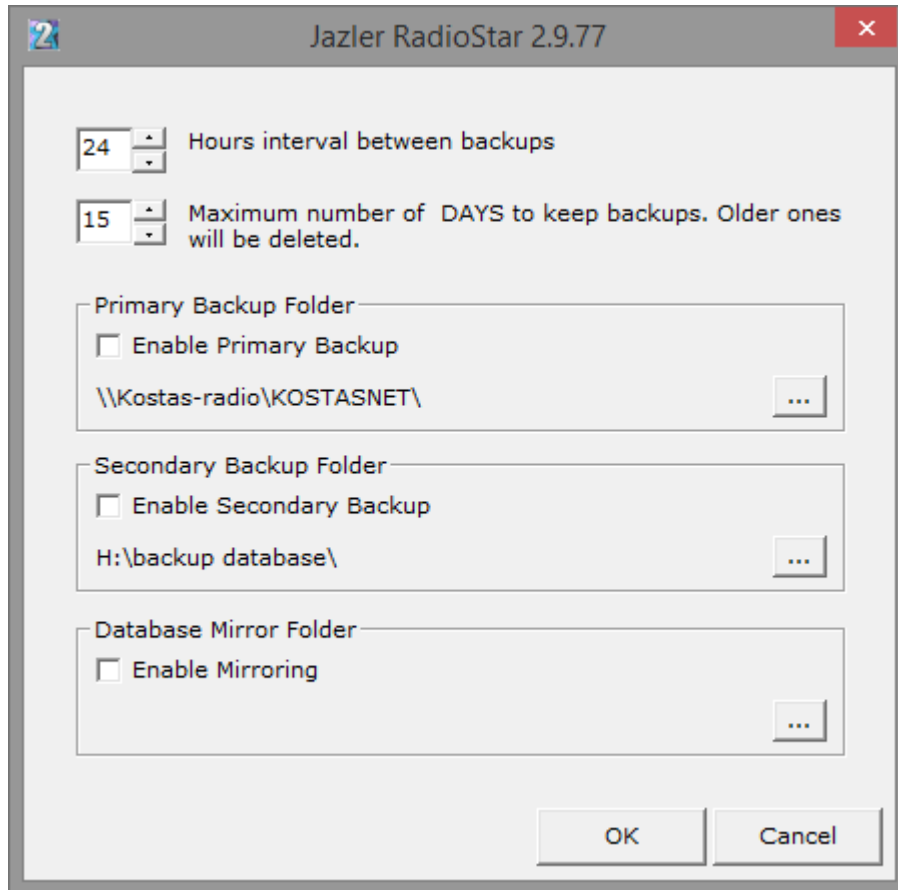


Figure 2-2

As you can see, here you can adjust the interval between the backups (from 1 hour to 480 hours) and also the maximum number of days that backups are kept.

Mainly there are provided 3 solutions for the backups:

**Primary Backup folder**, here you set where the primary backup will be kept. Usually, the user declares the same PC or another PC in the network.

**Secondary Backup folder**, here you set where the secondary backup will be kept. Usually, the user declares a network PC or another local hard drive or an external hard drive.

**Database Mirror Folder**, this option is used when the user wants another PC to be ready to broadcast at the minimum amount of time. When used, the database will be mirrored to the selected PC (with Jazler RadioStar2 Studio version installed) if the mirror PC is powered on. If it is powered off then whenever the backup operation is to be executed next and the PC is powered on the operation will be accomplished.

### 3 Mirroring facts

The mirror option offers the best solution in order for the station to start broadcasting again. The mirroring will take place at the defined time but you have to know that it is

- I. only one way, the main pc mirrors its database to the other pc (not the opposite)
- II. the mirror pc must be powered on in order for the mirroring to happen. If it is powered down the main pc will mirror its database at the next programmed time interval.
- III. Furthermore, the paths must be the same regarding the hard disks for both main pc and mirror pc. For example if you store the songs in the main pc in your hard disk with letter D the same must apply for the mirror pc too (audio files in D). Also the structure of folders must be the same for both PCs. E.g. the main pc stores the rock songs at "D:\AUDIO\ROCK", the mirror pc cannot have the rock songs at "D:\AUDIO\SONGS\ROCK" but the correct is "D:\AUDIO\ROCK" meaning **the path must be exactly the same** in order for the mirror pc to be 100% ready to broadcast at the minimum time.

## 4 Backup scenarios

For all the scenarios that follow, have in mind that the backing up and mirroring affects only the database and NOT the audio files. If you store locally the audio files, whenever you store new audio files in the main pc you should also store them in the mirror pc too.

- A. The most common case is to set RadioStar to take in regular time intervals a backup of its database. The folder that these backups are stored can either be local or in a network computer or even an external hard disk.

In this scenario, if something goes wrong, the **solution** is to import the backed up database on a new installation.

- B. An additional scenario is having Jazler backup at one computer and also mirroring the database to another computer.

For this occasion, if something goes wrong, the **solution** is to have the mirror pc run the RadioStar2 Studio version and you are good to go.

The difference between scenario A and B, is that on B you are ready to go on air at any time. But on scenario A you have to install Studio Jazler and import the database (or having the installation ready).

- C. The scenario that follows is highly **NOT** recommended but many radio stations use it and prefer it. The case is about the audio files being stored in another computer in the local network. The reason that we do not recommend is that
  - I. it requires a perfect (local, LAN) network setup,
  - II. with every pc having network card in good condition (is not malfunctioning) and
  - III. it is guaranteed that there are no ups and downs in the traffic rates of the network.

We will give an example of what might happen if these conditions are not met.

The case is that the audio files are stored in a server in our local network. As a result, when RadioStar2 is going to play an audio file, will have to access it through the network. If the above conditions, that we mentioned are not met, when RadioStar2 will want to access the audio file and cannot find it (due to network loss) or is transferred at low rates (ups and downs in the traffic rates) the consequences are unpredictable. From not playing an audio file, playing only part of the audio file or even force “rejecting” all songs because the audio file cannot be accessed at all.

This is why we highly **NOT** recommend the use of server for the audio files. The consequences of not meeting the conditions cannot be predicted.

Of course, if you know how to setup a trustworthy LAN network, it's up to you.

After having declared the conditions we can proceed to the scenario.

The main pc will have Jazler RadioStar2 installed and the audio files are not located locally but in another computer of the LAN that is used as a server for the audio files. The backup locations can be as described in the previous scenarios and the mirror pc will also have Jazler RadioStar2 installed. The main difference is that the paths and the structure of the hard disks of the main pc and mirror pc can differ from each other as the audio files are located in the server and the path in both occasions is the same.

In this occasion if something goes wrong, the **solution** is to start the RadioStar2 from the mirror pc and you are able to broadcast again.