



Jazler RadioStar 2

User Manual

RDS

Contents

1	Summary	3
2	RDS (Radio Data System)	3
3	TIPs	10

1 Summary

Many radio stations use RDS in order to transmit information about the song playing, station ID, time and date or any other info. Jazler is working with many RDS transmitters and can be programmed. The procedure of configuring the RDS requires the *Jazler RadioStar Studio Mode*.

2 RDS (Radio Data System)

First of all, we have to navigate to the appropriate screen: From control Panel press “Studio”.

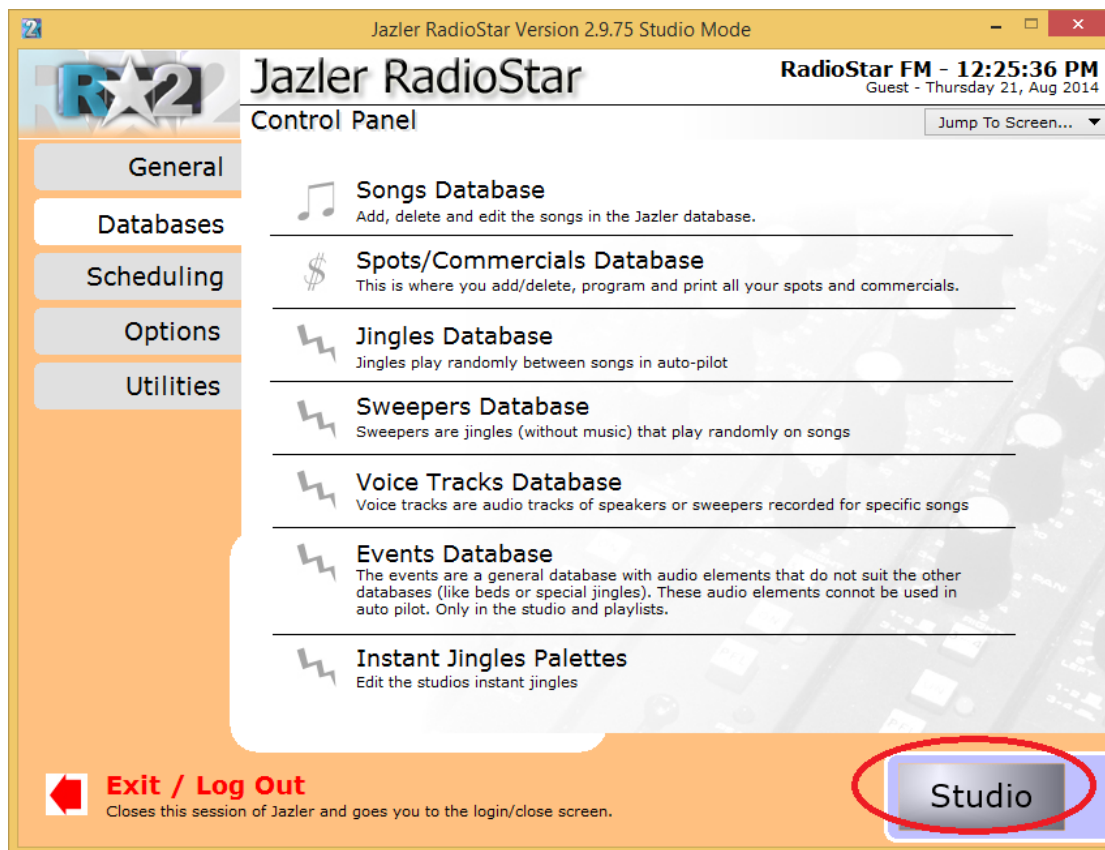


Figure 2-1

And you will be directed to **STUDIO** interface as the below image shows.

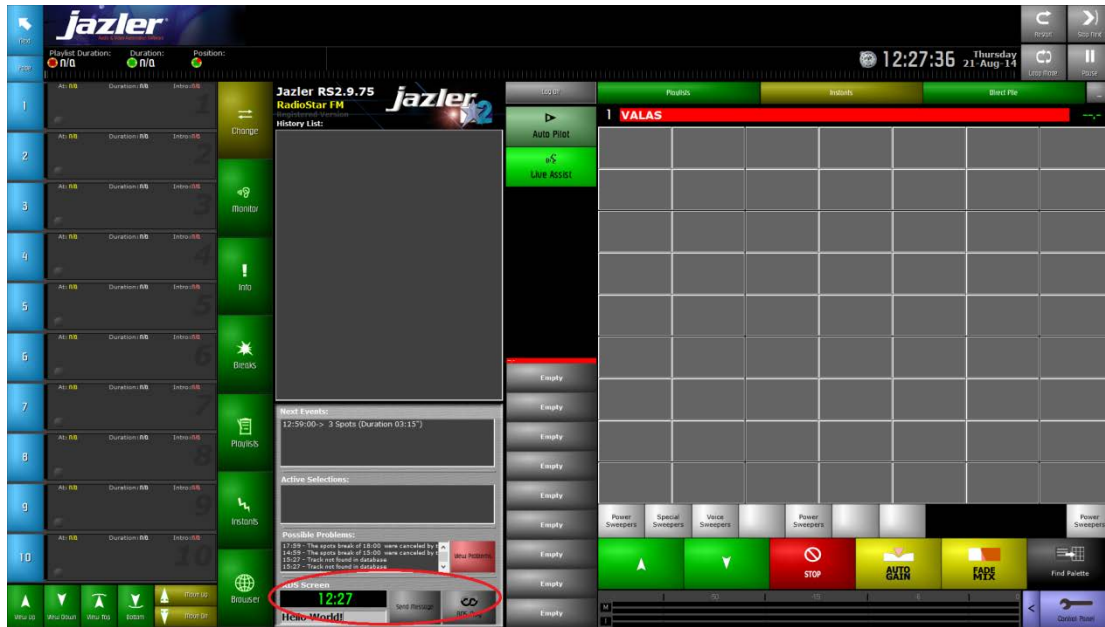


Figure 2-2

Here you can see the currently transmitted information and furthermore you can write your message on the fly and press **“Send Message”** to be transmitted by the RDS immediately. You can of course configure RDS and you can achieve that by clicking on **“RDS Prog”**.

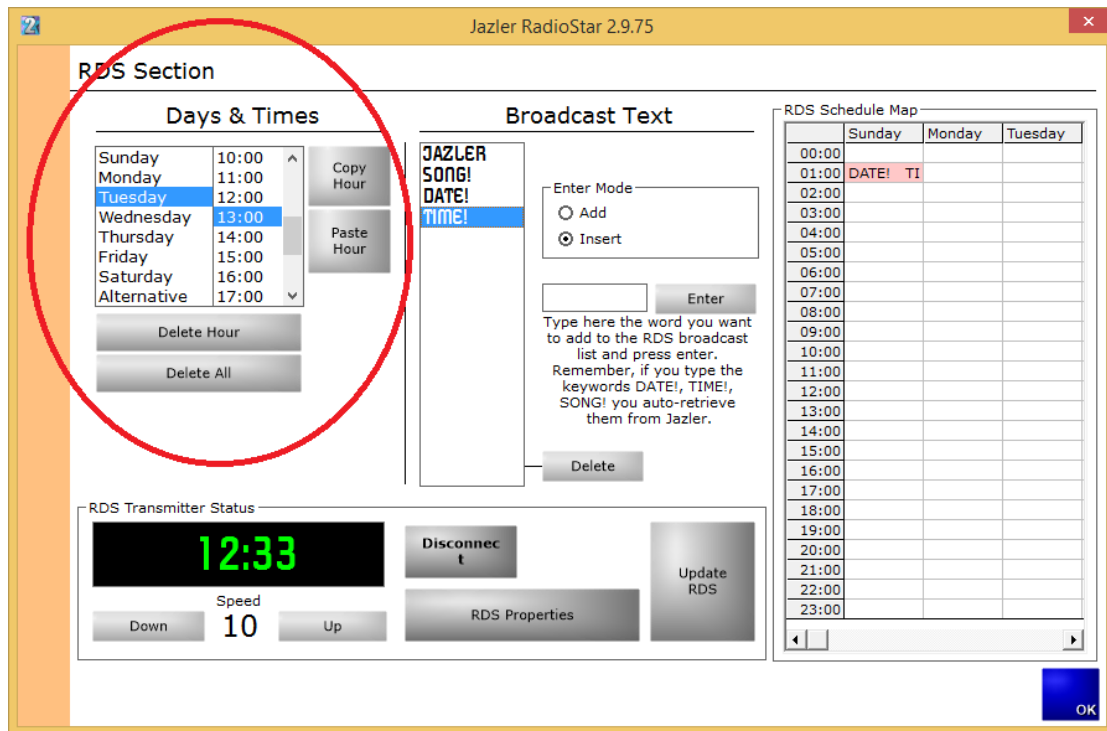


Figure 2-3

Here you can program the RDS to transmit your desired information. At the left of the screen we can see the programming by day of week and time of day. This allows for the maximum customizability depending on your needs. There is also the “default” option of **“Alternative”** which indicates what will be displayed unless configured differently. Furthermore, there are many buttons that help with the programming **“Delete Hour”**, **“Delete All”**, **“Copy Hour”** and **“Paste Hour”**.

The above mentioned were the tools and now we have to use them in order to configure the RDS, as shown in the picture below. While having chosen the desired hour and day we can type the desired text and press **“Enter”**. The **“Enter Mode”** indicates whether the text will be added at the end or be inserted in desired position. With the button **“Delete”** we can delete the desired text. Of course the changes are not applied automatically and are previewed in the table at the left. In fact, Jazler awaits you to press the button **“Update RDS”** to confirm the changes and update the **“RDS Schedule Map”** at the right of the screen.

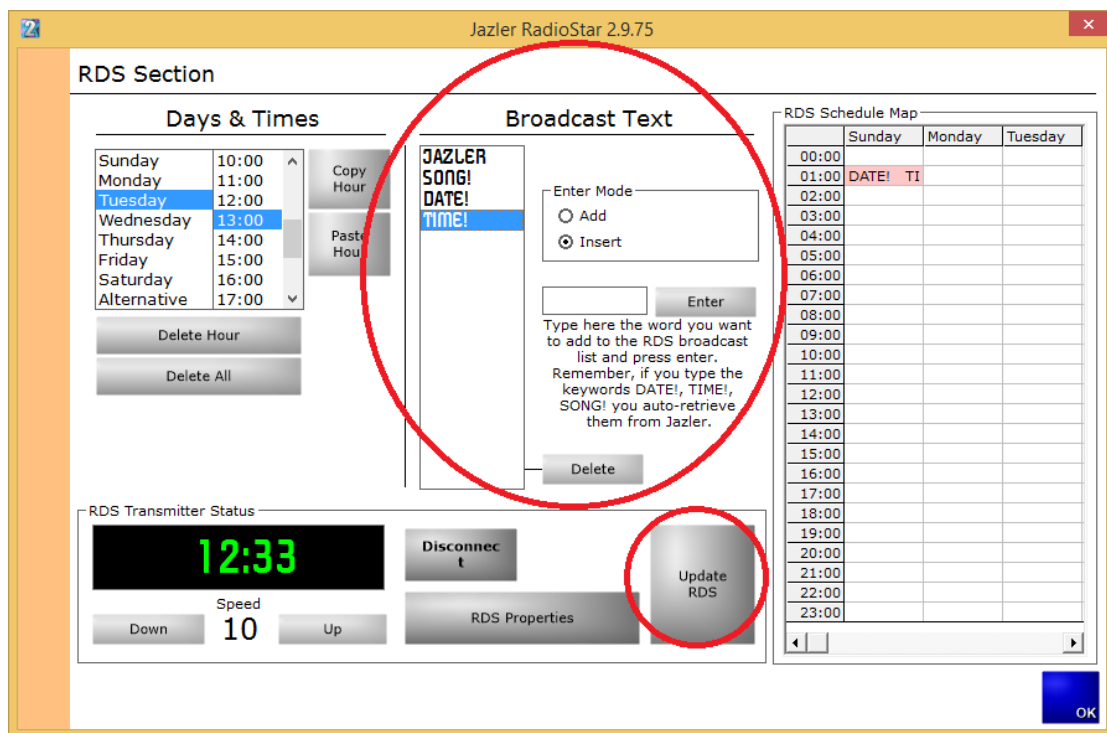


Figure 2-4

For your convenience there are 3 certain keywords that automate some actions. The keywords are **DATE!**, **TIME!** and **SONG!** that forces the RDS to display the current date, time and information about song respectively.

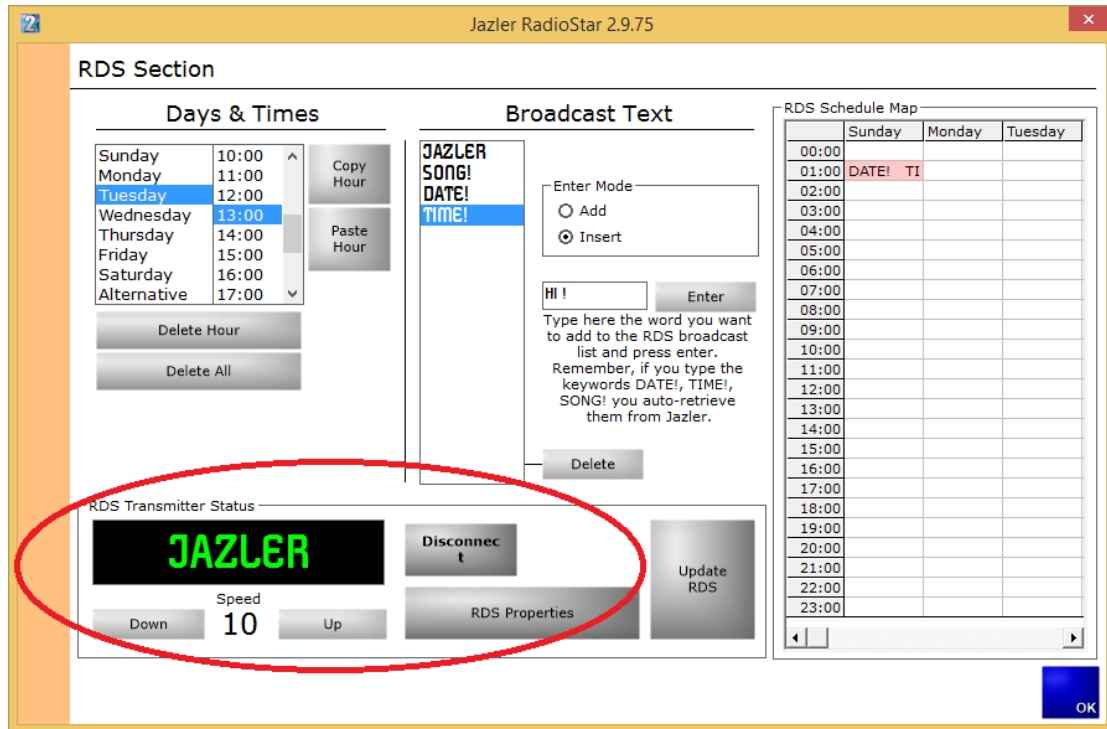


Figure 2-5

From the image above, at the bottom left of the screen we can preview how the RDS will be displayed to a receiver and can also adjust the update speed of the screen by pressing “Up” and “Down”. By pressing “Disconnect” you disable the RDS and nothing is transmitted. Finally, by clicking “RDS Properties” you are redirected to the image below.

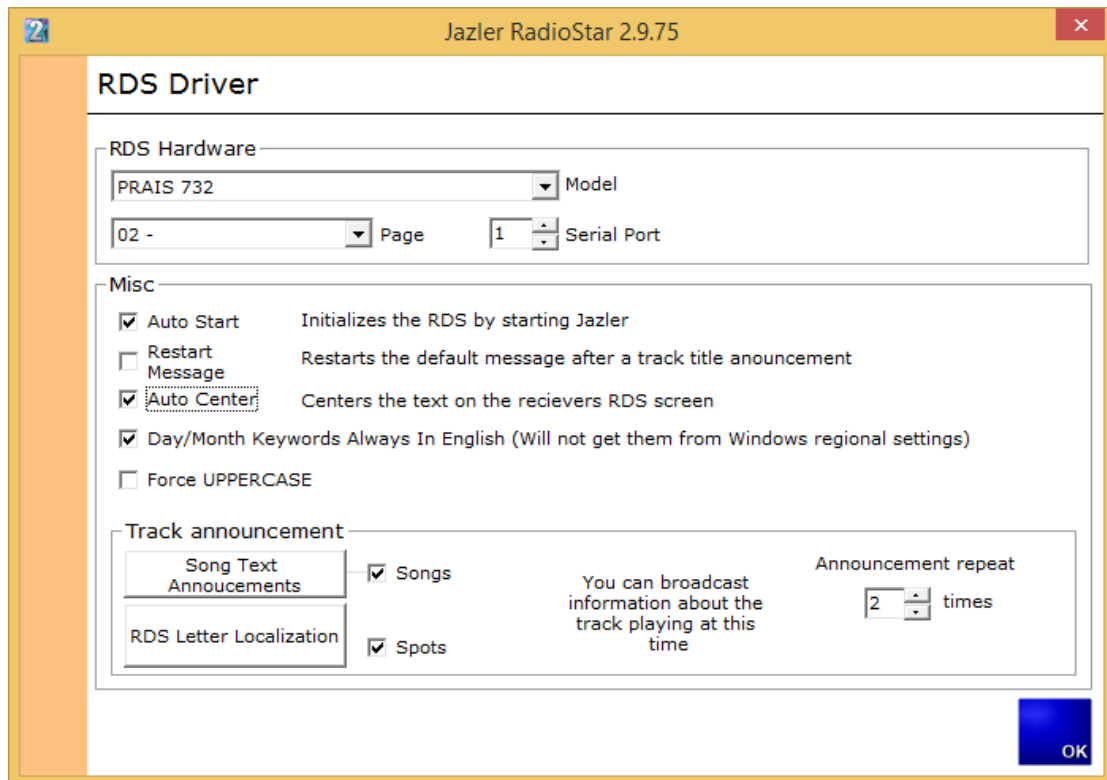


Figure 2-6

In this image you can change the properties of the RDS. For example you have to choose the model of RDS you use as it is crucial for some settings. Also, you have to know to which “Serial Port” the device is connected and declare it accordingly. Additionally, you can adjust how the “**Song Text Announcements**” will be made by pressing the corresponding button.

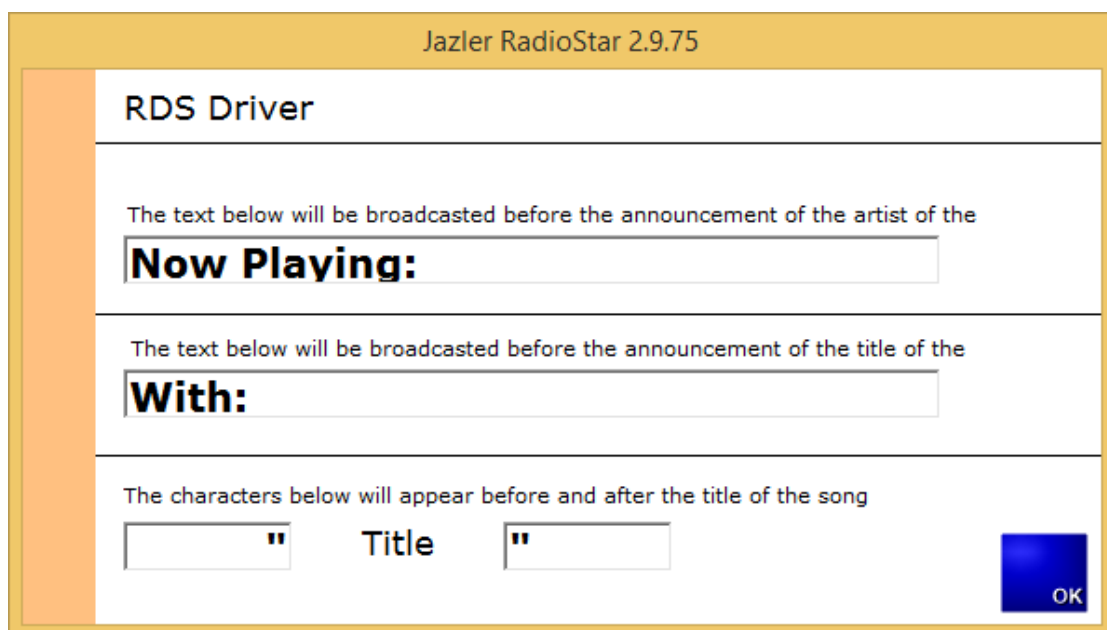


Figure 2-7

Here you can edit the text that will be displayed before the artist and title announcement and the characters that enclose the title of the song.

By pressing the **“RDS Letter localization”** you will be directed to the below image from which you can replace your local language characters to the desired Latin letters that will be accepted by the RDS protocol.

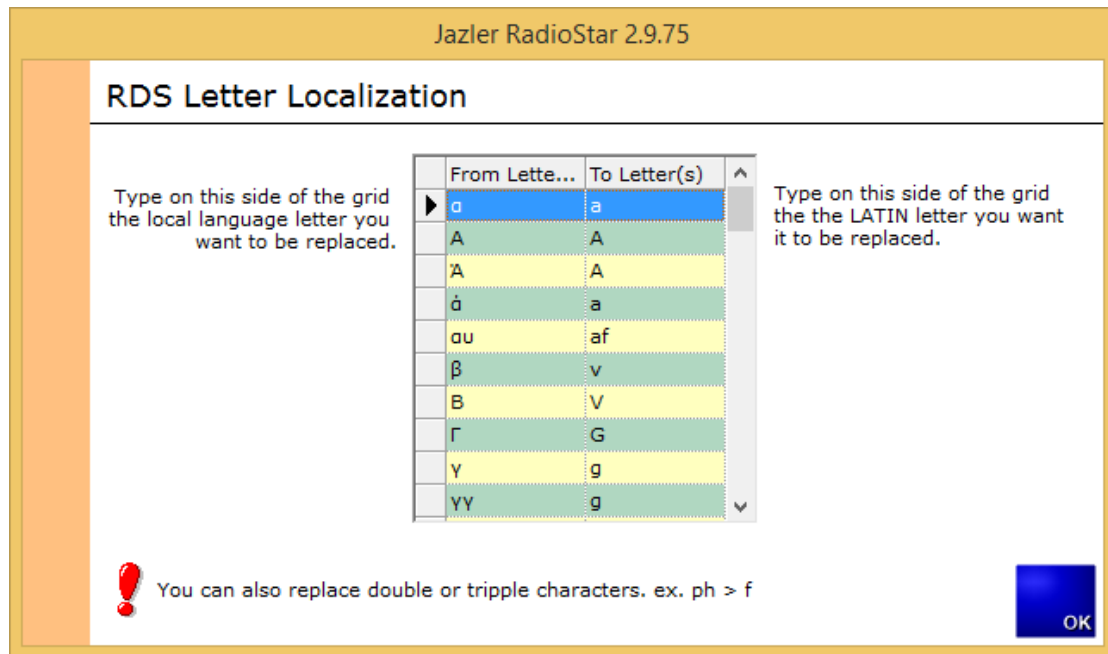


Figure 2-8

Finally, when the **“RDS schedule Map”** is filled based on your preferences you can edit each hour of the day by pressing the corresponding cell. The result is the preview table to show what will be displayed and by using the **“Enter”** and **“Delete”** buttons you can configure it.

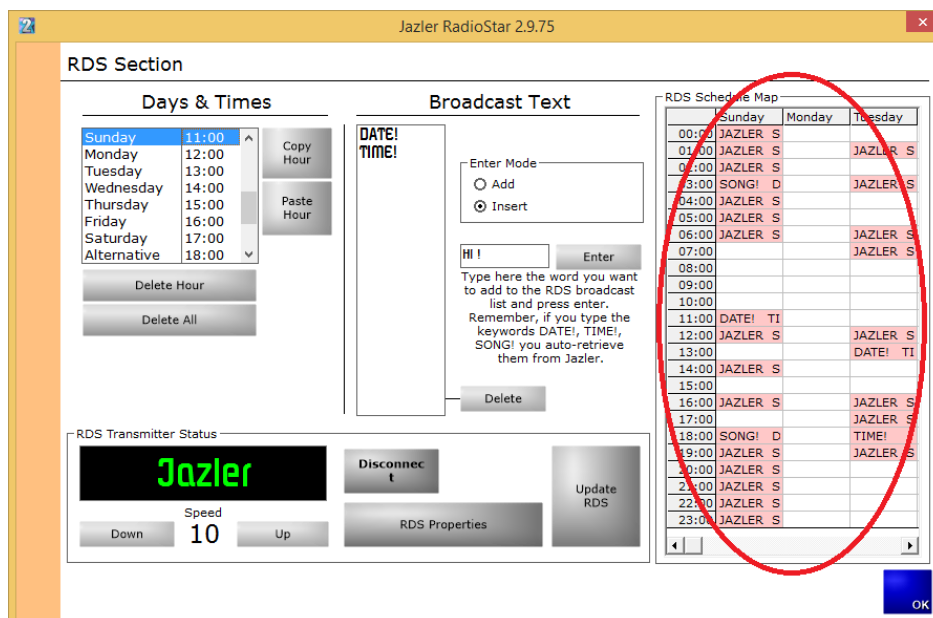


Figure 2-9

3 TIPS

- Remember to press **“Update RDS”** on order for the changes to take place.
- The predefined keywords are **DATE!** , **TIME!** and **Song!**

©2014 – Jazler Software – All rights reserved
January 2014 – Jazler Labs, Mytilene, Greece